

# THE NEST @ SOSSUS

SOSSUSVLEI - PRIVATE RETREAT



ULTIMATE SAFARIS  
LIFE ENRICHING JOURNEYS



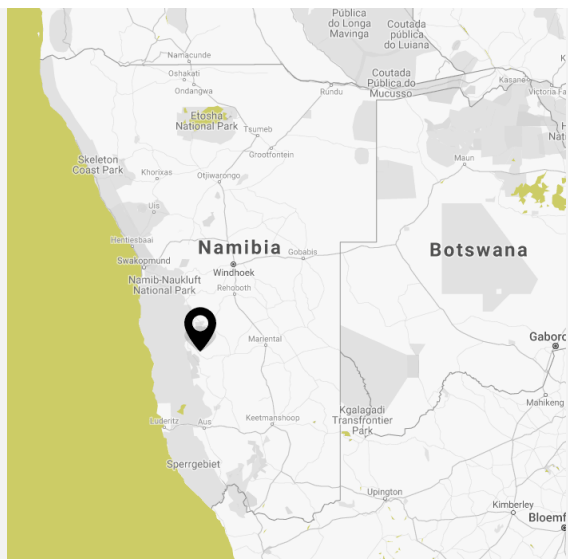
## LOCATION

GPS CO-ORDINATES

24°42'32.68"S 16°10'4.18"E

## AIRSTRIP

Hammerstein Airstrip  
Witwater Airstrip



## OVERVIEW

The Nest @ Sossus is tucked away in a lush valley on the private Namib Tsaris Conservancy, and it backs up against the great escarpment in the Namib Desert. This valley is a true desert oasis, boasting seasonal natural water pools and falls, and this makes it a magnet for the game moving through the area. A floodlit waterhole

24-hour emergency: +264 81 141 2275 • Tel: +264 61 248137 • info@ultimatesafaris.na

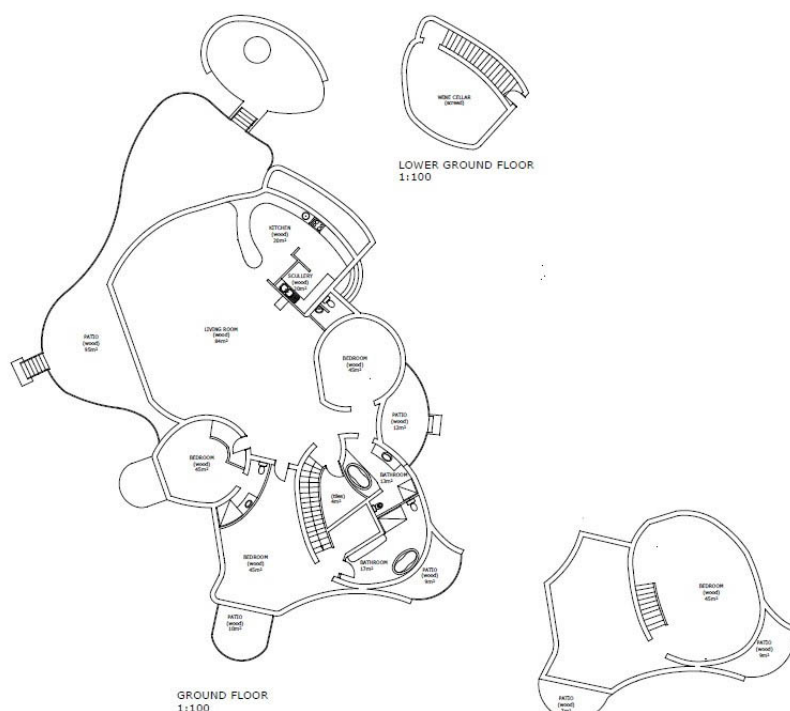


provides exciting and varied desert wildlife viewing as well as incredible birding. The Nest @ Sossus was designed using the unique structure of a Sociable Weaver nest as inspiration and it took eight years, including a three-year build, to bring this project to fruition, resulting in one of Namibia's most extraordinary private villas in terms of both design and décor. The Nest was designed by Porky Hefer, one of Africa's most awarded creative personalities, created by landscape conservationist Swen Bachran, and decorated by the up and coming Maybe Corpaci.

## AT A GLANCE

- Only exclusive use
- Best sold for groups of four up to maximum of seven guests
- 3 private en suite bedrooms (king & queen beds) as well as an additional en suite kiddie's room
- Each room is equipped with en-suite facilities with flush toilet, shower, fans, and electronic safe
- Hosted on an exclusive basis by one of Namibia's best naturalist guides, private butler and renowned gourmet chef
- Swimming pool
- Fully inclusive
- Outdoor and indoor lounge and dining areas.
- Outside areas with art installations on display
- A discreet children's playground
- Open all year round
- Minimum of three nights which includes a scenic Sossusvlei helicopter transfer, weather permitting (non-redeemable)
- Exceptions can be made for 2 night stays on case by case basis (excluding hot air ballooning)
- Children very welcome
- 100% solar powered
- WIFI
- A floodlit waterhole for wildlife viewing.
- Only 40 minutes' drive to the Sesriem gate with access to Sossusvlei.
- Yoga at an additional charge

## RETREAT LAYOUT



## AREA

The Nest @ Sossus is located on the private 24,000 hectare Namib Tsaris Conservancy, which is nestled between the Nubib and Zaris Mountains, a mere thirty minutes' drive from the gateway to Sossusvlei and the Great Namib Sand Sea which has recently been declared a World Heritage Site. The Conservancy was founded by Landscape Conservationist Swen Bachran in 2010, and it serves as a natural buffer from the harshest desert conditions and a refuge that is vital to wildlife through the dry season. Eight years of intensive work to reverse sixty years of inappropriate farming practices, including the removal of 89 km of internal fencing, the installation of wildlife watering points, the improvement of road networks, the rehabilitation of land and the reintroduction of wildlife that historically occurred here, has resulted in one of the most picturesque and ecologically sound tracts of land in the area. The Conservancy has gravel plains, mountainous areas with dry river valleys as well as a large raised plateau which towers above the desert below, and it is now home to some of largest concentrations of wildlife in the area, including Oryx, Springbok, Hartmann's Mountain Zebra, Burchell's Zebra, Kudu, Hartebeest, Giraffe, Steenbok, Klipspringer, Bat-eared Fox, and Aardwolf, as well as predators such as Leopard, Cheetah and Spotted Hyena. Plans for the acquisition of adjoining land to extension of the Conservancy are ongoing, as well as dropping fences to neighbouring like-minded conservation areas.

## PRESS

**The  
Telegraph**

Condé Nast  
**Traveller**

ELLE  
**DECOR**

**Wallpaper\***

**Sunday Times**  
THE PAPER FOR THE PEOPLE

**CASA**  
VOGUE

**design  
boom**

**REAL|life**  
SA'S LEADING LIFESTYLE & PROPERTY MAGAZINE

**THE TIMES**

**WENDY  
PERRIN**

travel  
**africa**

**PORTER**

## ACCOLADES



24-hour emergency: **+264 81 141 2275** • Tel: **+264 61 248137** • [info@ultimatesafaris.na](mailto:info@ultimatesafaris.na)



## EXPERIENCES



SOSSUSVLEI VISIT



MOUNTAIN PLUS BIKING



NATURE DRIVES & WALKS



YOGA / MASSAGE

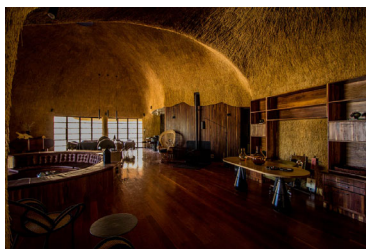
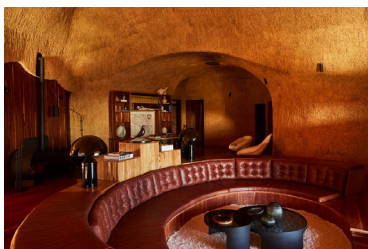


TRAIL TREATS



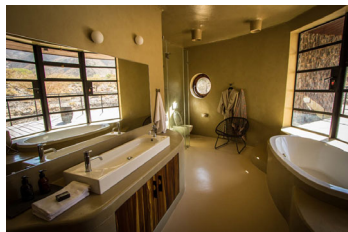
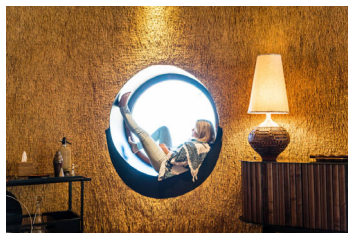
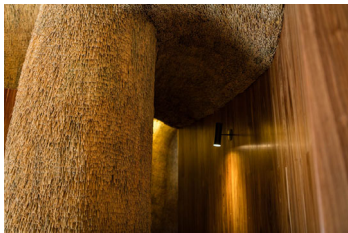
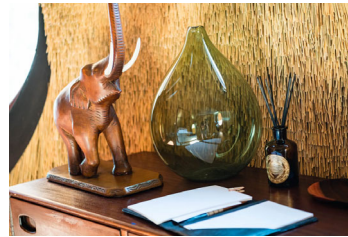
BALLOONING

## GALLERY



24-hour emergency: **+264 81 141 2275** • Tel: **+264 61 248137** • [info@ultimatesafaris.na](mailto:info@ultimatesafaris.na)





## IMPACT



PACK FOR CONSERVATION



NAMIB TSARIS CONSERVANCY

24-hour emergency: **+264 81 141 2275** • Tel: **+264 61 248137** • [info@ultimatesafaris.na](mailto:info@ultimatesafaris.na)