

# ONDULI RIDGE

DAMARALAND – PREMIUM CAMP



ULTIMATE SAFARIS  
LIFE ENRICHING JOURNEYS



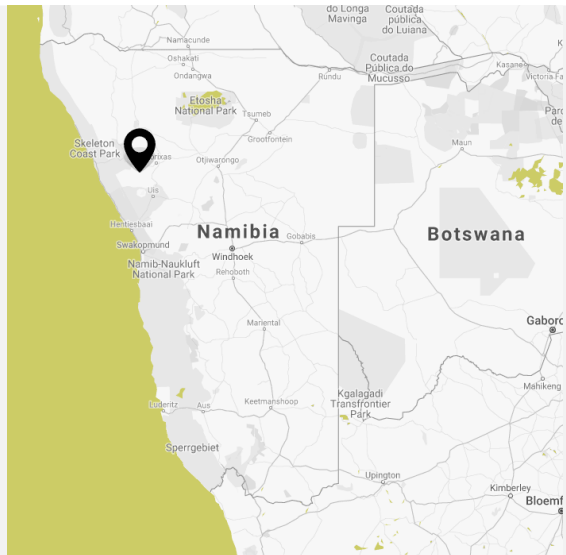
## LOCATION

GPS CO-ORDINATES

20°36'57.52"S 14°29'37.08"E

## AIRSTRIP

Onduli Airstrip (20 minutes from camp)



## OVERVIEW

Onduli Ridge, named after the resident giraffe of the area, is built at the base of two south facing granite outcrops which are connected by a ridge. This location allows for magnificent views of Namibia's highest mountain, the Brandberg, to the south and the dispersed cathedral-like granite inselbergs to the north.

24-hour emergency: **+264 81 141 2275** • Tel: **+264 61 248137** • [info@ultimatesafaris.na](mailto:info@ultimatesafaris.na)

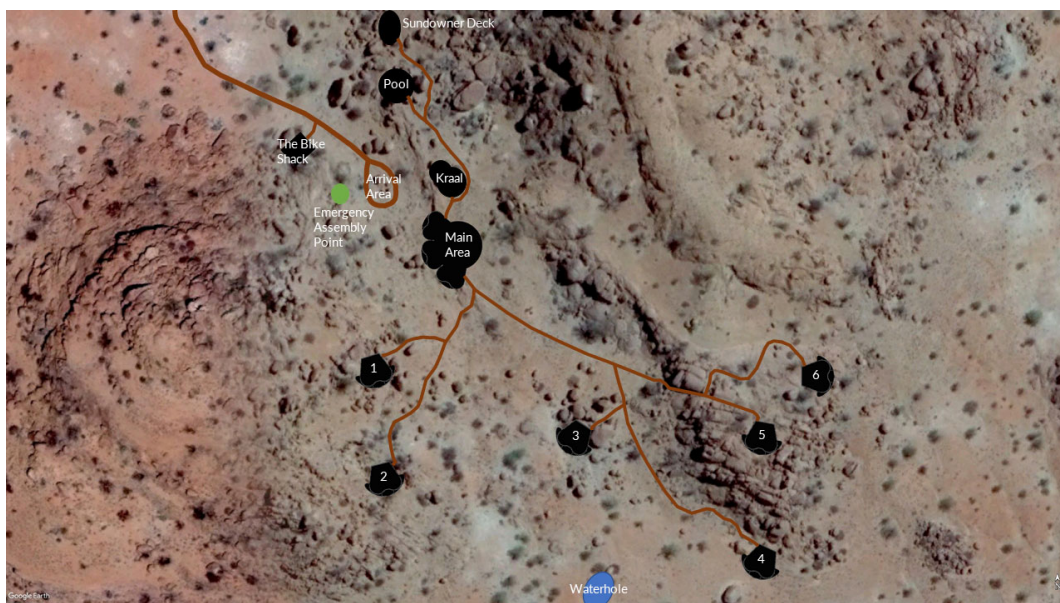


The six suites are hidden amongst the granite boulders that nestle the camp and the more temperate climate of central Damaraland allows for naturally ventilated suites, partial open-air bathrooms and largely open communal areas. The camp is designed to maximise the views of this most extraordinary landscape and every space becomes a viewpoint whether from the bed, the desk or the bathroom. Louvered shutters can be opened completely, blurring the lines between the indoors and nature, or closed for complete privacy if required. A king size bed cooled by its own 'climate conditioner' (Evening Breeze) is also the perfect place for afternoon siestas and the bed can be rolled out onto your private deck for a night under a billion stars as required. The camp exudes character and meticulous attention to detail meeting all requirements, from large rooms to libraries, rain showers, infinity pool and plenty of places to laze. Food to tantalize the palate after enjoying exceptional activities combines a genuinely unforgettable stay with exceptional quality while blending effortlessly into the natural surroundings.

### AT A GLANCE

- 6 en-suite suites (can accommodate families)
- Partial open-air bathroom with flush toilet & hot running water shower
- Star beds
- Air conditioned beds (Evening Breeze system)
- Swimming pool
- Fully inclusive
- Artisan coffee
- Crafted pizza evenings
- Spacious communal lounge with library, dining room, bar, campfire circle and deck
- Open year-round
- Minimum 2 night stays (3 nights recommended)
- Children very welcome
- 100% solar powered
- Waterhole for wildlife viewing
- WIFI in the rooms
- Own airstrip with waiting lounge and bathroom 20 min from camp
- Self-drive meeting point at airstrip and then transfer to camp
- Use of Swarovski binoculars

### CAMP LAYOUT





## EXPERIENCES



**ELEPHANT TRACKING**



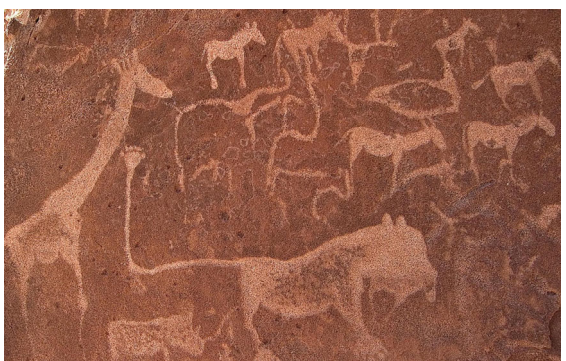
**BLACK RHINO ACTIVITY  
(EXTENDED STAYS ONLY)**



**STAR BEDS**



**BIKING**



**ROCK ART**



**NATURE DRIVES**



**NATURE WALKS**



**TRAIL TREATS**

24-hour emergency: **+264 81 141 2275** • Tel: **+264 61 248137** • [info@ultimatesafaris.na](mailto:info@ultimatesafaris.na)



## IMPACT



GRANIETKOP CAMPSITE



DORO !NAWAS CONSERVANCY



SAVE THE RHINO TRUST (SRT)



WILDLIFE CREDITS



GIRAFFE CONSERVATION FOUNDATION



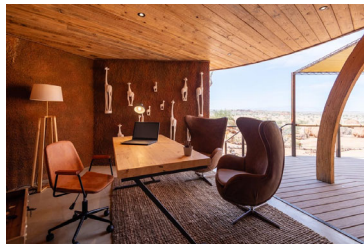
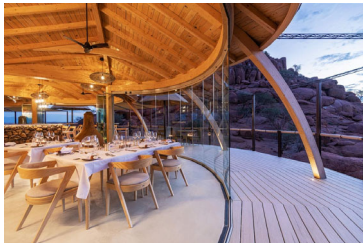
PACK FOR CONSERVATION

## GALLERY



24-hour emergency: **+264 81 141 2275** • Tel: **+264 61 248137** • [info@ultimatesafaris.na](mailto:info@ultimatesafaris.na)





24-hour emergency: **+264 81 141 2275** • Tel: **+264 61 248137** • [info@ultimatesafaris.na](mailto:info@ultimatesafaris.na)