

GALTON HOUSE

WINDHOEK - CLASSIC CAMP



ULTIMATE SAFARIS
LIFE ENRICHING JOURNEYS



LOCATION

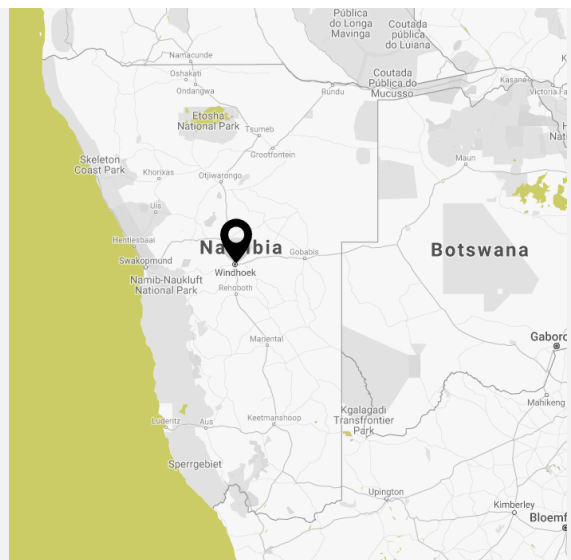
GPS CO-ORDINATES

22°53'25.99" S 17°09'14.23" E

AIRSTRIP

Eros Airport

Windhoek International Airport



OVERVIEW

Located in Windhoek and named after the famous explorer Sir Francis Galton, Galton House has a relaxed but efficient style which creates a very welcoming atmosphere. Impressive wildlife photography adorns the walls whilst the rest of the interior is a combination of modern minimalistic and understated chic. A mere ten

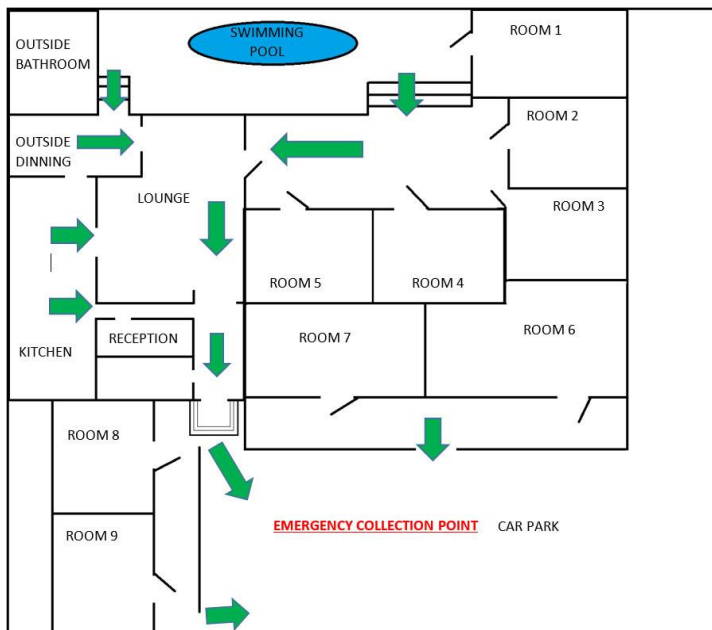
24-hour emergency: **+264 81 141 2275** • Tel: **+264 61 248137** • info@ultimatesafaris.na

minute drive from the centre of town and perched on the edge of Windhoek's northernmost affluent suburb of Eros, guests here are assured of a suitably relaxing stay with friendly and caring service. The communal areas consist of a large lounge, indoor and outdoor dining areas, a swimming pool, an early arrival/late departure day room (including toilet, shower, changing and re-packing facility) as well as understated garden areas. There is also a delightful 'al fresco' dining area by the pool where freshly prepared and very tasty meals can be served (including lunch and dinner). A number of shops, restaurants and supermarkets are within easy striking distance.

AT A GLANCE

- 9 en suite rooms
- Family rooms
- Satellite television
- Coffee/tea stations and electronic safes in rooms
- Air conditioning
- Swimming pool
- Bed and breakfast basis (lunch, dinner and bar service charged additionally)
- Artisan coffee
- Spacious communal inside and outside lounges and dining rooms
- Interactive open-plan kitchen
- Early arrival/late departure day room
- Open year-round
- No minimum night stay
- On demand shuttle service (charged additionally)
- Children very welcome
- 100% solar powered
- WIFI
- Telephone

CAMP LAYOUT



AREA

Windhoek, Namibia's capital city, is nestled amongst rolling hills, bounded by the Eros Mountains in the east, the Auas Mountains to the south and the Khomas Hochland in the west. It is a meeting place between Africa and Europe, the modern and the old. In the capital's main street, well-preserved German colonial buildings are in sharp contrast with modern architectural styles, while Herero women in their traditional Victorian dresses mingle with executives dressed in the latest fashions. Centrally located within Namibia, Windhoek is an excellent starting point for an adventurous holiday for many visitors to the country and an ideal base from which to explore the rest of the country.

EXPERIENCES



WINDHOEK 'REDEFINED' TOUR



WINDHOEK MOUNTAIN BIKING



LOCAL DINING

IMPACT



PACK FOR CONSERVATION



STAINABLE MANAGEMENT PRACTICES

ACCOLADES



GALLERY



24-hour emergency: **+264 81 141 2275** • Tel: **+264 61 248137** • info@ultimatesafaris.na